

# Nursing Excellence Through Simulation

Pamela Anderson BSN, RN  
Keri Kavouras MSN, RN-BC

# Objectives:

- ~ Discuss the role of simulation in developing critical thinking in the novice nurse
- ~ Explore multiple uses of the simulation format for staff development, competency and student clinical experiences.

# Using Simulation at SRHC

- ~ New Hire Orientation
- ~ Annual Competencies
- ~ Local Schools of Nursing
- ~ Mock Codes
- ~ CNA Training
- ~ Network Hospital Competency Days
- ~ Local High School Programs

# The New Hire Nurse

- ~ Focus on the development of critical thinking
  - ~ Identify the problem of risks for problem
  - ~ Manage problem or risk
  - ~ Apply appropriate rationale or prioritize

# Simulation in Orientation

- ~ 8 simulations
  - ~ Development of unexpected complications
  - ~ Use of SBAR
  - ~ Incorporate CMS indicators
- ~ Group size
  - ~ Teams of up to 5
  - ~ Involvement of Student Centered Learning.
- ~ Discuss the tasks within the big picture

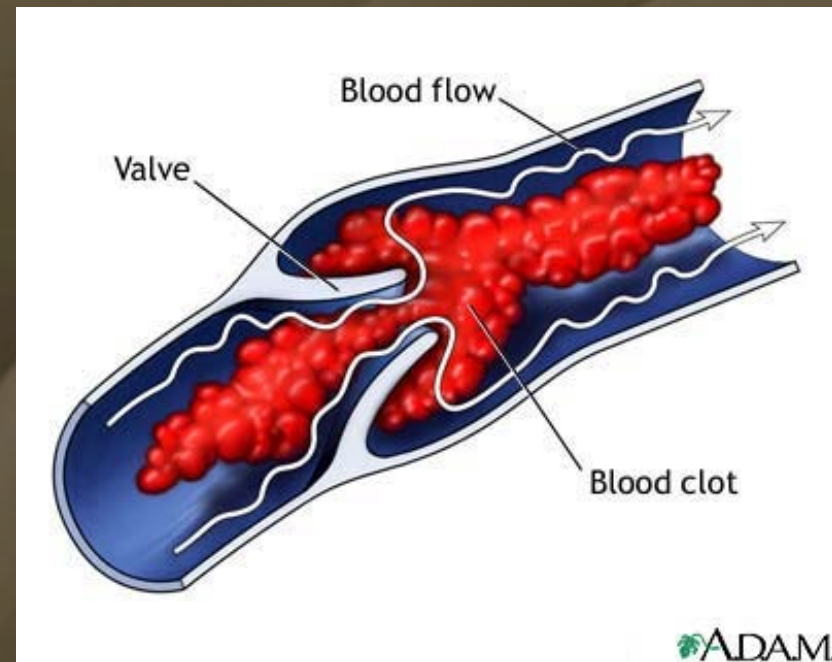
# Blood Transfusion

- ~ Demonstrates ability to set up and administer blood per policy
- ~ Identify & manage reaction
- ~ Utilizes SBAR for physician call
- ~ Evaluates patient response and adjusts plan of care as appropriate



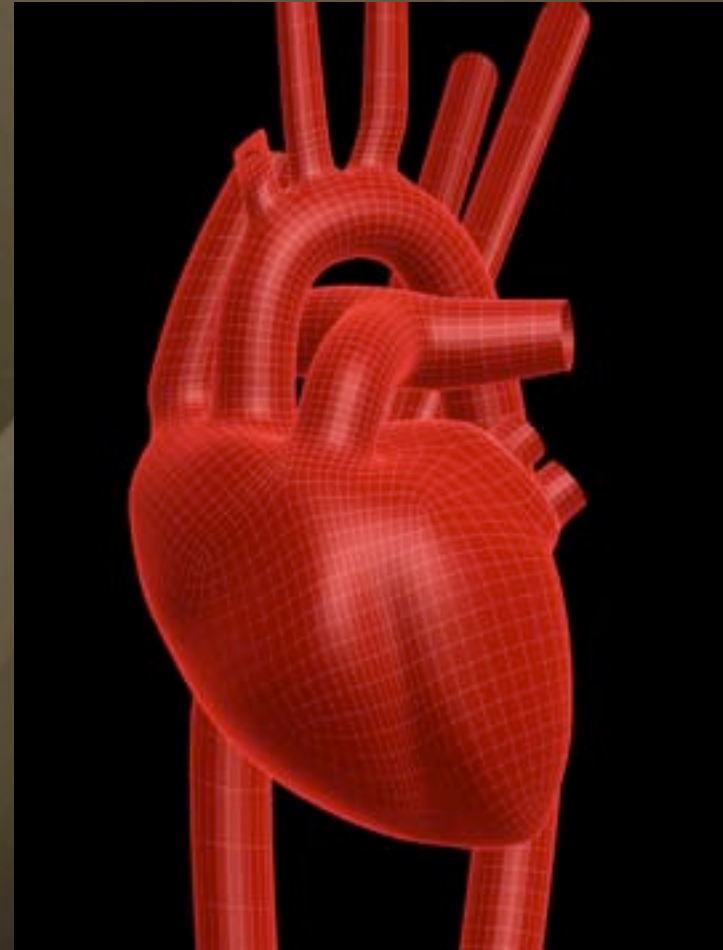
# Pulmonary Embolism

- ~ Recognizes risk for pulmonary embolism and/or DVT
- ~ Recognizes potential PE when symptoms develop and reacts accordingly
- ~ Initiates heparin protocol and performs subsequent calculations
- ~ Identifies potential adverse reactions of anticoagulant therapy



# Congestive Heart Failure

- ~ Recognize signs and symptoms of CHF
- ~ Revises plan of care as needed for worsening heart failure.
- ~ Implements measures to care for significant other
- ~ Discusses CMS indicators and provides education



# Diabetic Ketoacidosis



- ~ Participates in independent stations outside of simulation
- ~ Develops plan of care for diabetic patient
- ~ Utilizes hypoglycemic protocol appropriately to treat hypoglycemic episode
- ~ Develops education and discharge plan for diabetic patient

# Alcohol Withdrawal

- ~ Discuss the physiology involved in alcohol withdrawal
- ~ Participates in independent learning stations outside of simulation
- ~ Scores patient on CIWA assessment and provides appropriate intervention



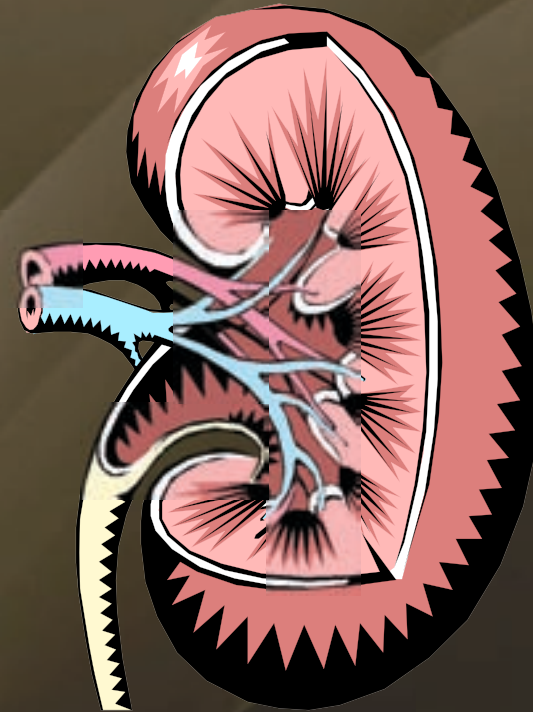
# Gastrointestinal Bleed



- ~ Correlates medication history with possible risk factors.
- ~ Designs care plan consistent with safety measures
- ~ Completes admission and medication reconciliation
- ~ Recognizes symptoms of possible perforation and intervenes appropriately

# Renal Failure

- ~ Formulates plan of care for patient with major abdominal surgery.
- ~ Recognizes early signs of acute renal failure
- ~ Recognizes potential contributing factors to acute renal failure
- ~ Follows isolation precautions



# Multiple Patient



- ~ 22 year old with bilateral femur fractures
- ~ Post op hysterectomy with low hemoglobin
- ~ MVA with fractured ribs and chest tube
- ~ Diabetic patient with expected dismissal today



# Staff Development

- ≈ Nurse Residency Program
- ≈ Mock Codes
- ≈ Neonatal Resuscitation Program
- ≈ NICU Orientation
- ≈ General Orientation
- ≈ CE Days

# Continuing Education

- ~ Alcohol withdrawal
- ~ Diabetes
- ~ Culture
- ~ In the Works:
  - ~ End of Life
  - ~ Behavioral Health
- ~ Developed from identified learning needs
- ~ Use of Protocols

# Competencies

- ~ Birth Center
- ~ Medical Surgical
- ~ Cardiac
- ~ ED
- ~ Respiratory Therapy
- ~ Flex Pool

# Schools of Nursing

- ~ Prepare like clinical
- ~ No charge
- ~ Tight clinical time
- ~ Safe environment
- ~ Opportunity to guarantee care of certain diagnoses
  - ~ Involvement in critical situations

# Other Student Activities

- ~ Summer Extern program
- ~ CNA/LNA classes
  - ~ Together with area Vo-Tech
  - ~ Use of Sim Lab for skills check off
- ~ High School Students

# Challenges

- ~ Development Days
- ~ Student Preparedness
- ~ Facilitation by school instructors
- ~ Expensive education



# Goals



- ~ Med/Surg Competency Day
  - ~ More Sim, Less Skills
- ~ ICU Involvement
  - ~ Competency Day
  - ~ ICU Course
- ~ ACLS